

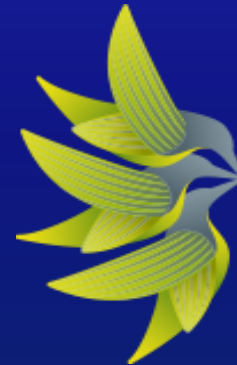
# Identifying Isolated Microgrids in Rural Areas Using a Genetic Algorithm

Manou Rosenberg

Department of Computer Science and Software Engineering



THE UNIVERSITY OF  
WESTERN  
AUSTRALIA



FORREST  
RESEARCH  
FOUNDATION

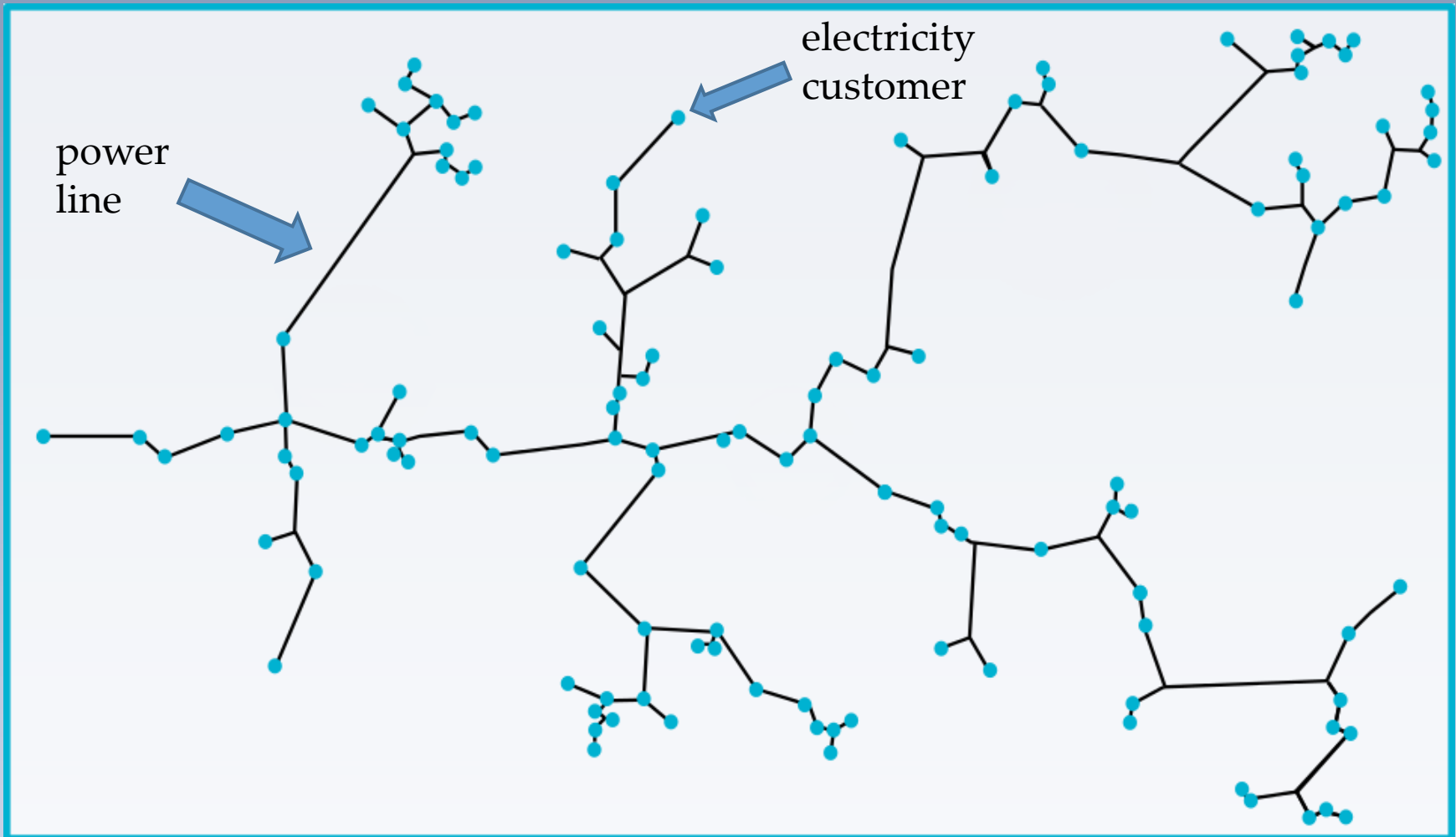
# Motivation

Benefits of MGs and SPS:

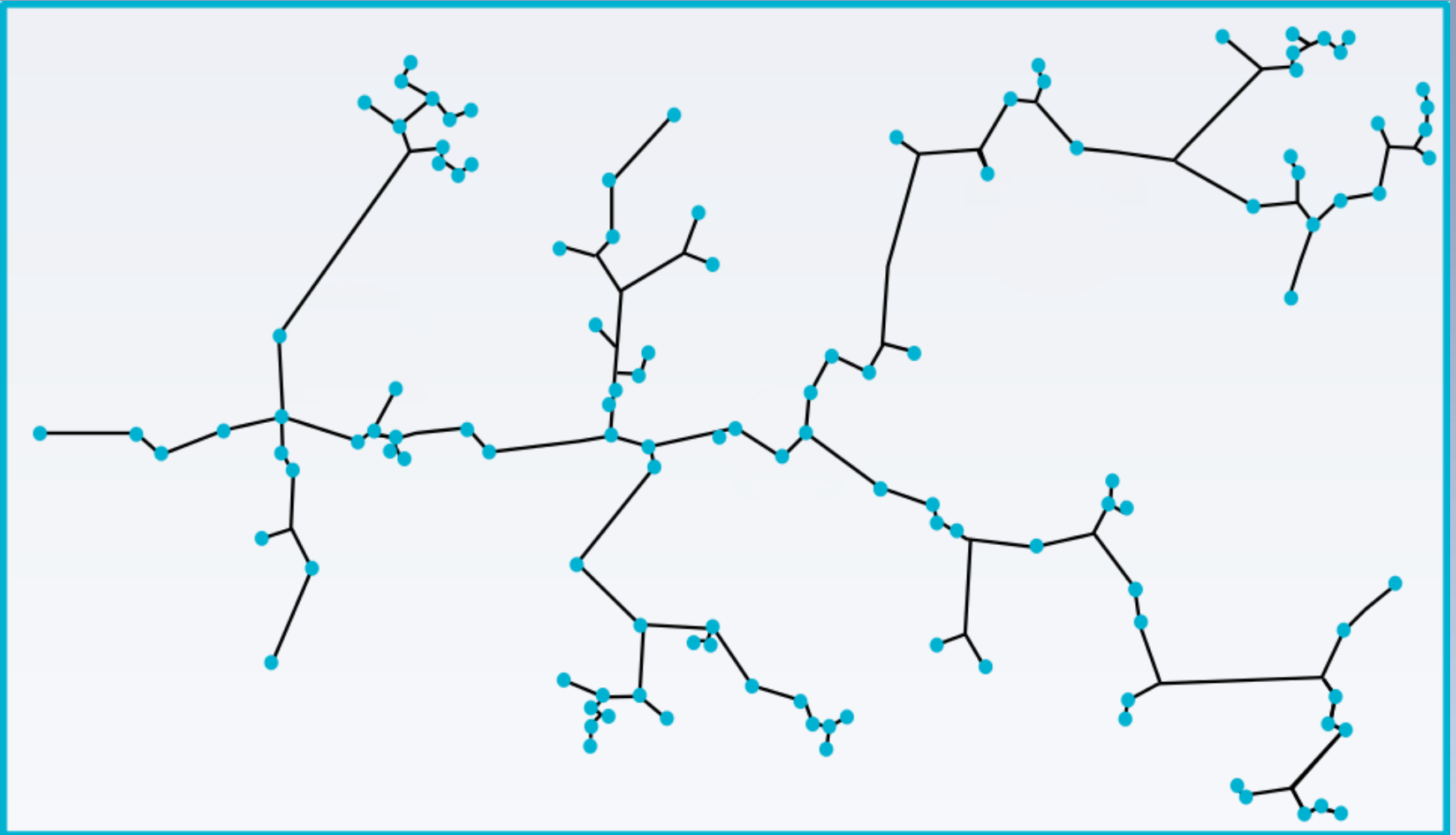


- Local power generation can replace long power lines:
  - Lower network costs
  - Improved supply reliability and safety
- High penetration of renewable energy resources

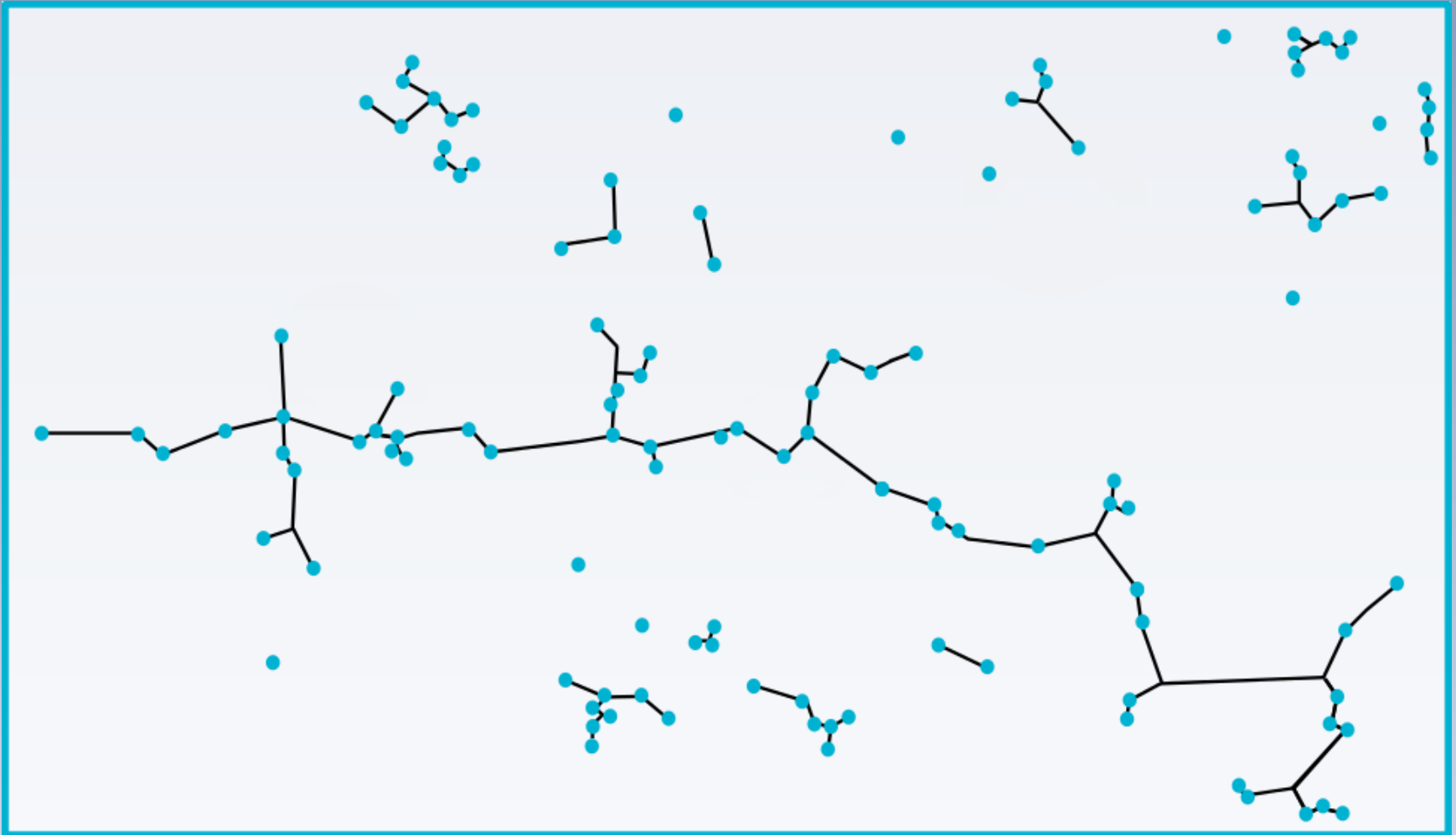
- Rural electricity distribution networks can be represented as graphs.



**Aim:** Finding an optimal network topology minimising the total network costs over a certain time period.



**Aim:** Finding an optimal network topology minimising the total network costs over a certain time period.



**Aim:** Finding an optimal network topology minimising the total network costs over a certain time period.

